



VERTICAL FORM-FILL-SEAL MACHINE BELTS

Belt Production Quality Standards

- Standard OEM replacement belts for all major manufacturers
- Homogenous molded covers that provide uniform wear surfaces free of hard spots to increase performance
- Covers without any splices or seams for increased reliability
- Continuous durable wearing covers that provide consistent friction for life of the belt
- Non-glazing compounds that offer excellent grip and slip prevention



- Excellent abrasion resistance for an increased trouble-free lifespan
- Excellent flexibility without cracking or tearing
- CNC equipment used to machine holes, slots, grooves, and profiles within precise tolerances for outlasting performance
- Metal Sealing Bands available
- See a selection of our standard parts on the next page



OEM Part Number Reference

Manufacturer	Part Number	Size	BCA Part Number	Warning	Cover	Belt Type	Slots	Holes	Groove
Bosch	8101825307	50T10-920	50T10-920 UK R-A	—	Red	Timing	Diagonal	X	X
	8101825308	50T10-920	50T10-920 UK F1	—	Yellow	Timing	Diagonal	X	X
	8101844583	50T10-920	50T10-920 UK F2	—	Yellow	Timing	Diagonal	X	X
	8101845161	50T10-920	50T10-920 UK F	—	Yellow	Timing	Horizontal	X	X
	8101857314	50T10-920	50T10-920 UK R-B	—	Red	Timing	Diagonal	X	X
	8101871823	30T10-920	30T10-920 UK R-A	—	Red	Timing	Diagonal	X	X
	8101871824	30T10-920	30T10-920 UK R-B	—	Red	Timing	Diagonal	X	X
Eagle	700370	32.50" x 2.625"	GB-32.5R-PS	CB	Red	Flat	Diagonal	X	N/A
	700724R2	835-5M-60	835-5M-60-MB-P	CB	Blue	Timing	Horizontal	X	X
Fabrima	500 275 E	25T10-800	25T10-800 NG-MWCBX	CB	White	Timing	None	None	None
Fres-co	SS53149	285L100	285L100 NG-MG-H	CB	Tan	Timing	None	X	None
Fuji	GB109001	40-S8M-632	40-S8M-632-XN-P	CB	Multiple	Timing	None	X	X
Hayssen	10197A0530	720-8M-30	720-8M-30	CB	None	Timing	None	None	None
	10197A0534	1040-8M-30	1040-8M-30	CB	None	Timing	None	None	None
	10197A0540	27.875" x .245"	GB-27.875RX.9375	CB	Red	Flat	None	None	N/A
	10197A0560	27.875" x .245"	GB-27.875BX.9375	CB	Blue	Flat	None	None	N/A
	10197A0561	23.875" x .245"	GB-23.875BX.9375	CB	Blue	Flat	None	None	N/A
	10197A0562	280XL043	280XL043 UP DDO	—	Orange	Timing	None	None	None
	10197A0587	280XL093	280XL093 UP DDO	—	Orange	Timing	None	None	None
	10197A0615	280XL043	280XL043 NG-MR	CB	Red	Timing	None	None	None
	10197A0616	280XL093	280XL093 NG-MR	CB	Red	Timing	None	None	None
	101A12385	340XL081	340XL081 UK DDHB-G-P	—	Orange	Timing	None	X	X
	03487A4041	795 x 15 x 0.127 mm	SS-795-TFE	—	Teflon	Stainless Steel	N/A	N/A	N/A
	03487A5554	795 x 15 x 0.127 mm	SS-795-ECL	—	Elipse	Stainless Steel	N/A	N/A	N/A
03487A4639	945 x 15 x 0.127 mm	SS-945-TFE	—	Teflon	Stainless Steel	N/A	N/A	N/A	
Ilapak	CM17000003	270L100	270L100 NG-MG276	CB	Tan	Timing	None	None	None
	CM17000028	50T10-440	50T10-440 UK-MB35	—	Blue	Timing	None	None	None
	CM17000045	25T10-560	25T10-560 US MB35	—	Blue	Timing	None	None	None
Ishida	51-4896-17	255H150	255H150 NG-MR-P1	CB	Red	Timing	None	X	X
	X03-4-185	28" x .75" x .005"	SS-28	—	None	Stainless Steel	N/A	N/A	N/A
Kliklok	013756P	240XL150	240XL150 NG-PG3	CB	Tan	Timing	None	None	None
	P0041767	240XL150	240XL150 UP DD	—	Orange	Timing	None	None	None
	83739	320XL150	320XL150 NG-MR-G	CB	Red	Timing	None	None	X
	077186	320XL150	320XL150 UPDD-PG	—	Orange	Timing	None	X	X
	077187	320XL150	320XL150 UPDD-G	—	Orange	Timing	None	None	X
	92930	32T10-610	32T10-610 UPDDY-UP DD	—	Yellow	Timing	None	None	None
	123165	320XL150	320XL150 UP DD-SPEC-1	—	Orange	Timing	None	None	None
Matrix	16501	800-5M-25	800-5M-25-ML	CB	Linatex®	Timing	None	None	None
	17097	890-5M-25	890-5M-25-ML	CB	Linatex®	Timing	None	None	None
	57684	340XL175	340XL175 UP DDO-P	—	Orange	Timing	None	X	X
Pacmac	9211-0019	27.875 x .245 mm	GB-27.875TX.9375	CB	Tan	Flat	None	None	N/A
Rovema	1.010.04.2.018.23.4	50T10-630	FFS-A-M	CB	Multiple	Timing	None	None	X
	1.010.04.2.137.23.3	50T10-630	FFS-G-M	CB	Multiple	Timing	None	X	X
	1.010.04.2.138.23.4	29T10-630	FFS-B-M	CB	Multiple	Timing	None	None	X
	1.200.04.1.047.00.4	50T10-630	FFS-I-M	CB	Multiple	Timing	None	None	None
	1.207.04.1.002.00.3	50T10-630	FFS-E-M	CB	Multiple	Timing	None	X	X
	1.207.04.1.014.01.3	30T10-630	FFS-H-M	CB	Multiple	Timing	None	X	X
Sandiacre	1226BL	225L093	225L093 NG-MR	CB	Red	Timing	None	None	None
	BA137200	270L098	270L098 NG-MB-PS-A	CB	Blue	Timing	Diagonal	X	X
	BA137200	270L098	270L098 NG-MB-PS-B	CB	Blue	Timing	Diagonal	X	X
TNA	2930-6	367L050	367L050 NG-MBK-P	CB	Black	Timing	None	X	None
Triangle	03326-05	340XL180	340XL180 UP-DSP	—	Orange	Timing	Diagonal	X	X
	03326-06	340XL175	340XL175 UK DDO-P	—	Orange	Timing	None	X	X
	12385	340XL081	340XL081 UK DDHB-G-P	—	Orange	Timing	None	X	X

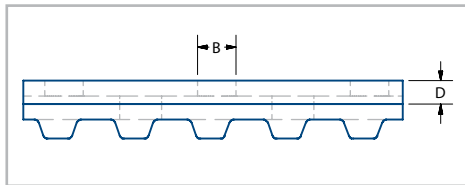
Linatex® is a registered trademark of Weir Minerals



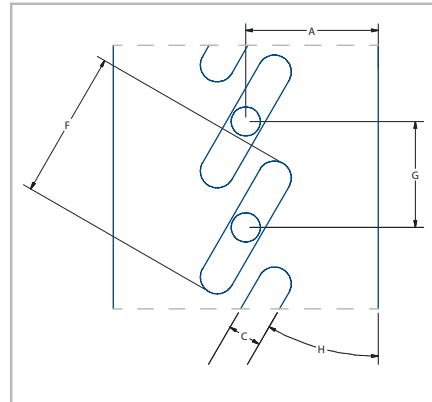
WARNING: This product can expose you to chemicals including carbon black, which is known to the State of California to cause cancer or birth defects or other reproductive harm. For more information visit www.P65WARNINGS.ca.gov

Specifications

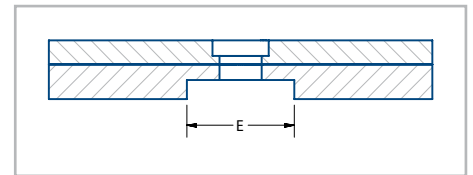
Megadyne Belt Corporation has been manufacturing OEM and custom packaging belts for the vertical Form-Fill-Seal segment since 1985. Our customer service representatives and engineering team work in tandem to provide solutions to your belting needs with unsurpassed quality. The following information is a reference to help better identify your current belts and future needs.



Side view of teeth

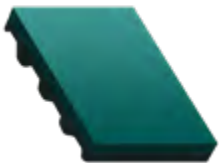


Routed slots with holes

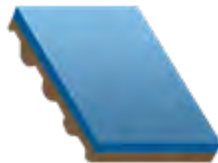


Groove ground on the tooth side

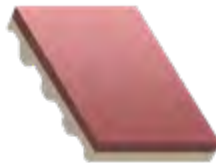
Types of Covers



Dark Green Millable Urethane



Blue Natural Rubber



Linatex®



Dual Durometer Orange Urethane



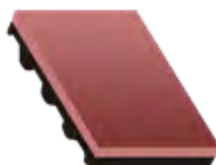
DuraTaq™ Orange Natural Rubber



Tan Gum Rubber



Yellow Foam



Red Natural Rubber



Black Natural Rubber



See More Cover Options at MegadyneAmericas.com



Megadyne Americas is an ISO 9001:2000/2008 certified company and a member of the National Industrial Belting Association (NIBA), the Power Transmission and Drive Association (PTDA), and the Packaging Machinery Manufacturers Institute (PMMI).