



BLUE ANTI GLAZE

RUBBER COMPOUND

Introduction

Our Rubber Compound Capabilities



Since 1985, Megadyne Belt Corporation has been designing and manufacturing custom belt solutions for a wide range of industries, including packaging, paper and currency handling, fiber optics, and food processing.

To meet our clients' unique needs, our team creates customized natural rubber molded covers to optimize performance and efficiency in product handling applications.

Most of our belt cover designs are seamless — constructed from an extruded uncured rubber base, molded, then ground to exact specifications. For some applications, we can use cured rubber to produce seamed covers. Our expert team of technicians can also custom machine grooves, slots, and holes into belts to meet specific application needs.

Our recent acquisition by the worldwide belt leader, the Megadyne Group, has given us access to an expanded base of resources and materials, allowing us to expand our product offerings and capabilities to serve an even more diverse global range of clients.

One of our most advanced belting covers includes our resilient Blue Anti Glaze Rubber Compound. This material features a smooth surface finish and extreme resistance properties.



WARNING: This document is recognized as a Product Brochure with its main intent to be application-product use training. While this is not a selling document, we do recognize some items include chemicals that are on the California Prop 65 list effective August 30, 2018. The chemical identified within the belts included in this document is carbon black. For more information visit www.P65WARNINGS.ca.gov

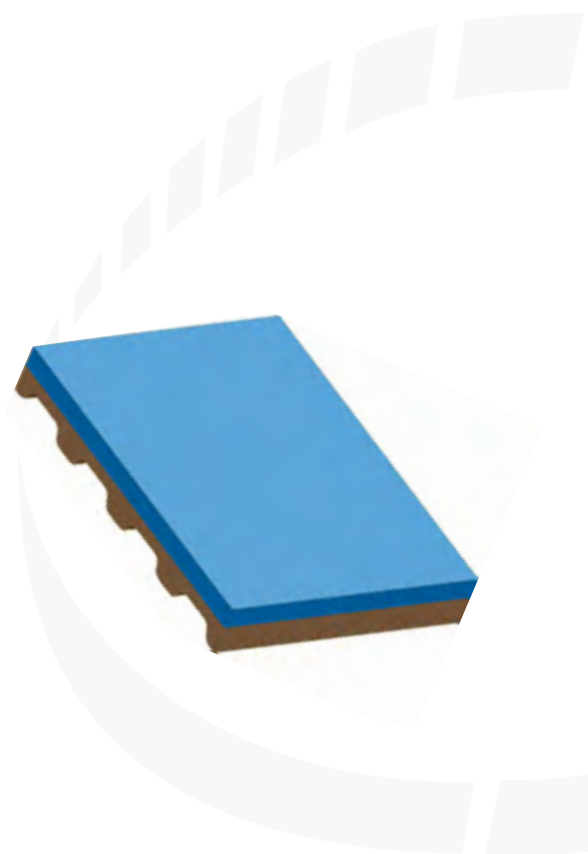
The Versatility of the Blue Anti Glaze Rubber Compound

The Blue Anti Glaze Compound, one of our five natural rubber cover offerings, has excellent thermal resistance, able to withstand temperatures ranging from -10°C to 105°C (14°F to 221°F), while also being extremely resistant to abrasion and chemicals. It can withstand ethylene, alcohol, water, and glycol, among others, making it well suited for a variety of applications.

The anti glaze material, meanwhile, allows this cover to resist glazing and retains its tackiness, grip or coefficient of friction during long production runs, thereby minimizing unwanted shifting as materials move along the belt or premature belt replacement.

Blue Anti Glaze Compound Specification

Color	Blue
Polymer	Natural Rubber
Anti Glaze	Yes
Hardness (Shore-A):	40 ± 5
Abrasion Resistance	Good
Specific Gravity	0.98 to 1.02
Tensile	2000 psi min.
Elongation	560% min.
Mooney Viscosity	17.4 (ML 1+4)
Thermal Resistance	-10°C to +105°C
Compression Set Rebound	Low
Chemical Resistance	Alcohol, Water, Ethylene, Glycol



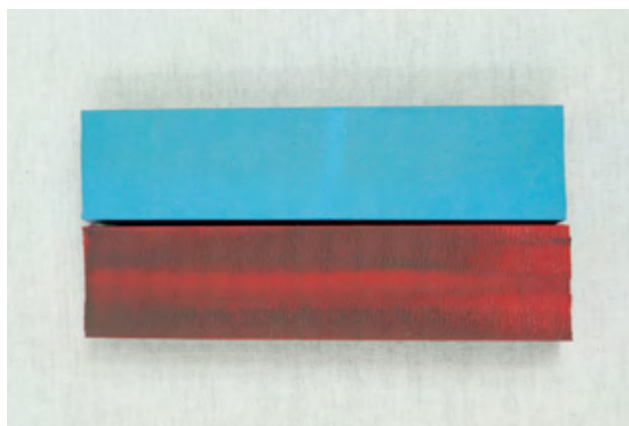
CASE STUDY

Using Blue Anti Glaze to Optimize Bakery Production



One recent Megadyne America client, a large bakery, was experiencing problems with the timing belts used to transfer wrapped cookie bars. The wrapping was rubbing off on the belts — which were covered in traditional red Linatex® rubber — causing them to lose tackiness and requiring frequent cleaning.

To address this issue, our client had to frequently stop the conveyor in order to recalibrate the system, thereby halting production and hurting productivity. They turned to Megadyne America to develop a material solution that would restore the function of the timing belts and minimize downtime.



Above image is an illustration of a Blue Anti Glaze belt and a glazed red Linatex® belt.

Megadyne America replaced the cover customer's belt with our Blue Anti Glaze Rubber Compound. Unlike the red Linatex®, our blue cover gripped the product and resisted the glazing that occurs in traditional materials. With the help of Megadyne America, the bakery is now able run its line all the way through, cleaning belts only in between shifts.

About Megadyne Americas

Since 1985, Megadyne Belt Corporation has been providing customers with custom belting solutions to meet a variety of needs. Committed to quality and constant improvement, Megadyne Americas is an ISO 9001:2000/2008 certified company and a member of the National Industrial Belting Association (NIBA), the Power Transmission and Drive Association (PTDA), and the Packaging Machinery Manufacturers Institute (PMMI).

In addition to our innovative Blue Anti Glaze Rubber Compound, we offer a wide range of other molded, laminated and fabricated cover solutions made from various materials including silicone, EPDM, foam, PVC, Hypalon(R) and urethane on various base belts. All of these belts can be further modified with grinding, routing and perforating capabilities that allow us to offer a virtually limitless selection of belting configurations.

To learn more about our Blue Anti Glaze Rubber Compound or discuss how we can help you with your unique belting needs, contact us today.